

# Toyokawa Sigtseeing Tours

Fantastic **5** Sightseeing Plans!

See and enjoy the best of Toyokawa!



# Plan A

## Classic Toyokawa Sights

# Historical Power Spot Discovery



### Points of interest



**Myogonji main temple**

Visit the three main Inari Shrine buildings.



**Reikozuka**

- Amazing fox statues are dedicated as offerings here.
- Reikozuka is believed to be a power spot for money.
- Enjoy the many flags waving you along to the main temple.



**Shinyu shrine**

Visit Shinyu Shrine and Tokujo Temple. In Tokujo Temple see the historic "Shakujo well" dug by Ambassador Kobo.

### Time Place

⋮	Meitetsu (1,110yen) JR(210yen)	
	Nagoya Sta. Toyohashi Sta.	Toyokawa Inari Sta. Toyokawa Sta.

10:00	Toyokawa Tourist Information Center
-------	-------------------------------------

10:00	Enjoy Toyokawa Inari Myogonji main Temple
⋮	See Toyokawa Inari Reikozuka and inner parts of the Inari Shrine area
12:00	

12:00	Stroll around the Toyokawa Inari Monzen area
⋮	Enjoy lunch at one of the many places on Natsukashi Seishun shopping street ( Try Sowaka Ippukutei - a gallery tea shop)
13:30	

13:40	Walk around Yakushi Nyorai Temple
-------	-----------------------------------

14:40	Enjoy Shinyu Shrine Tokujo Temple
-------	-----------------------------------

15:00	Visit Sakuragaoka Museum
⋮	See Kuyo tower (historical Toyokawa naval arsenal)
16:00	

⋮	Meitetsu (1,110yen) JR(210yen)	
	Toyokawa Inari Sta. Toyokawa Sta.	Nagoya Sta. Toyohashi Sta.

### Points of interest

- The Toyokawa Tourist Information Center is housed within a remodeled historical house. Open everyday from 9:00 to 16:00.



**Natsukashi Seishun shopping street**

Toyokawa inarizushi, Eel of Toyokawa

- Sowaka Dango (300 yen) available here.



**Yakushi Nyorai Temple**

Visit Choju Kenko Yakushi. The Megusuri tree here is believed to have health benefits.



**Sakuragaoka Museum**

- Learn about history from ancient times at the local museum. Open from 9:00 to 17:00, closed on Mondays

<b>Total time required</b>	1.To/from Nagoya by train: approx. 8 hours 2. To/fromToyohashi by train: approx. 6 hours
<b>Total cost</b>	1.To/from Nagoya by train: approx. 2,890 - 4,890 yen 2. To/fromToyohashi by train: approx. 1,310 - 3,310 yen ●Train fare: 1. To/from Nagoya 2,220 yen. 2. To/from Toyohashi 420 yen (fares as of 2017) ●Meals: approx. 500-2,500 yen
<b>Other Information</b>	Each month on the 22nd Toyokawa Inari has its monthly festival day.

# Plan B

## Toyokawa's Nature and History

# The Edo Period "53 Stations of Tokaido" and Mt. Miyaji hiking plan



### Points of interest



**Meitetsu Meidenakasaka Station**

● Approx. one hour on foot from Meidenakasaka station to Mt. Miyaji parking area 1.



**Ohashi Inn**

- Ohashi Inn
- Akasaka rest spot (Yoramaikan)  
Free entry. Open 9:00 to 17:00 closed on Mondays and end of year/new holidays.
- Akasaka Shukuba shiryō shitsu (local historical exhibition room, including Ukiyo-e paintings of those times)  
Otowashougaiakushukan 2F (Otowa Lifelong Learning Center 2F)  
Free entry. Open 9:00 to 17:00 closed on Mondays, end of year and new year holidays.
- See the beautiful wild cherry trees at Chohuku temple.
- See the cycads at Josen temple. (Featured in Ando Hiroshige's 53 stations of the Tokaido painting "Akasaka")

Book a volunteer guide in advance by calling the Toyokawa Tourist association. ☎



**Goyu pine tree lined road**

- This street represents the place of the 36th prosperous post town on the legendary 53 stations of the Tokai Road.
- Goyu pine tree lined street extends for 600m with 300 pine trees and is a sight typical of the famed Tokaido.

### Time Place

...	<b>Meitetsu</b> (920yen) <b>Meitetsu</b> (300yen) Nagoya Sta. Toyokawa Inari Sta. Meiden Akasaka Sta. Meiden Akasaka Sta.
9:50	Meiden Akasaka Sta →Mt. Miyaji Parking Area 1
10:00	Mt. Miyaji Hiking
12:00	Enjoy lunch and the surroundings at Akasaka Inn.
13:00	Take a walk around Akasaka Inn Ohashi Inn Chohuku temple Josen temple
14:00	Take a walk around Goyu Inn Visit Torin temple
14:30	30 minutes walk Along the way stop by at "Pino café" or "Goyu Ofuku" for refreshments and handmade folk art. <b>Pino café</b>
15:00	Visit the Goyu pine tree lined street Museum
16:00	<b>Meitetsu</b> (920yen) <b>Meitetsu</b> (300yen) Kōu Sta. Kōu Sta. Nagoya Sta. Toyokawa Inari Sta.

### Points of interest



**Mt. Miyaji Summit**

- Mt. Miyaji hiking  
Take in the wonderful view from the top of the mountain.  
30 min hike up the mountain from parking area (picnic tables as rest stops along the way)  
90 min climb down the mountain (to the old Tokaido roadside)



**Unagi-ya**

- Enjoy lunch at "Unagi-ya" eel restaurant.
- Shop for souvenirs at "Ozaki-ya".



**浄泉寺の蘇鉄**

- Torin temple  
This is a temple where the important historical figure Ieyasu Tokugawa rested. (When he was lord of Mikawa).



**Goyu pine tree lined street museum.**

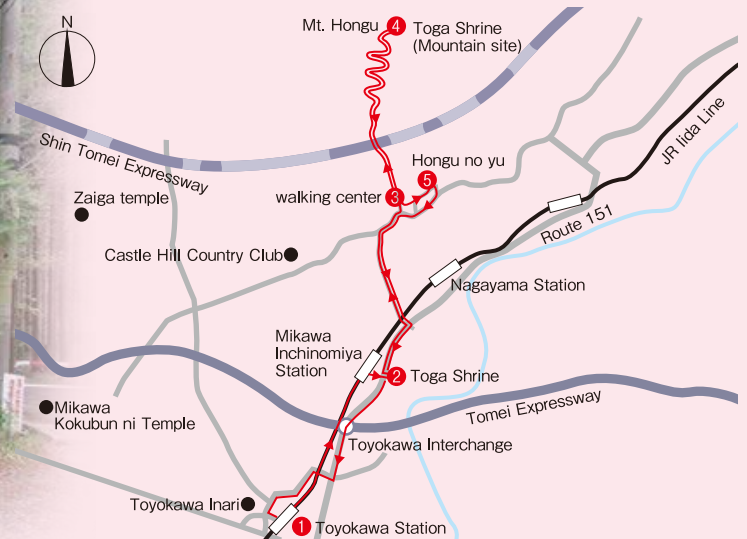
- Goyu pine tree lined street museum.  
Here are artifacts from the 35th post town, Goyu Shuku, from the historical 53 stations of the Tokai Road are displayed. (Free entry. Open 10:00-12:30, 13:30-16:00. Closed Mondays and end of year/new year holiday period.)

<b>Total time required</b>	1. To/from Nagoya: approx. 8 hours 2. To/from Toyokawa: approx. 6 hours ※Walking distance approx. 7km
<b>Total cost</b>	1. To/from Nagoya: approx. 2,890-4,890 yen 2. To/from Toyokawa Inari: approx. 1,100-3,100 yen ● Train fare: To/from Nagoya 2,930 yen. To/from Toyokawa Inari 600 yen (prices current as of 2017) Lunch: approx. 500-2,500 yen
<b>Mt. Miyaji</b>	At an altitude of 362m, the pleasant walking trail and nearby parking area make Mt. Miyaji an easy and enjoyable hike. On a clear day even as far as Mt. Fuji can be seen from the summit! In spring, visitors can also enjoy the beautiful white Koaburatsutsuji flowers. Mt. Miyaji also holds an annual "Autumn leaves festival "in late November.

# Plan C

Health and Wellness

# Mt. Hongu Trek and Hot Springs



### Points of interest



**Toga Shrine**

● Mt. Hongu is said to be an object of worship. Visitors can pray at the shrine located on the scenic summit of Mt. Hongu.



**Walking Center**

● Get all the information you need here about climbing Mt. Hongu, including maps. A guide can be booked in advance through the Toyokawa Tourist Information Center. Picnic lunch can be bought at the nearby convenience store before your climb.



**Hongu no yu Hot Springs**

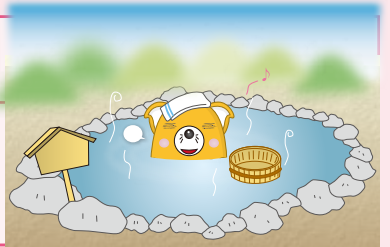
● Relax and refresh in the soothing hot spring baths. Restaurant also available. Open 10:00-22:00, closed Wednesdays (or the following day if Wednesday is a public holiday).

Time	Place	Time	Place
9:23	JR (190yen) Toyokawa Sta. ↓ Mikawa Inchinomiya Sta.	4-5 hours	Enjoy the climb from the walking center to the summit. Depending on individual abilities the climb takes 2-3 hours to the top and 1.5-2 on the way down. Altitude is 789m.
9:27	JR Iida Line*Holiday Timetable		
	Approx. 5 minutes walk		● Visit the mountain top part of Toga Shrine and enjoy your lunch there picnic style in the beautiful surroundings. ● There is also a spot where Mt. Fuji can be seen from!
9:35	Visit Toga Shrine	15:00	Hongu no yu Hot Springs entry fee 610 yen + (if needed) towel and toothbrush set: 600 yen.
10:07	Toga Shrine front (Toga Jinja Mae) ↓ walking center  (Mainly medium/large buses run on this route). Bus line name: Ichinomiya *Holiday timetable	15:44	Hongu no yu (200 yen) ↓ JR Toyokawa Sta.
10:17		16:06	Toyokawa Community Bus *Holiday Timetable



**Mt. Hongu Guide map**  
Guide map of Mt. Hongu's signposts for climbers

<b>Total time required</b>	Approx. 7 hours (climbing approx. 5 hours)
<b>Total cost</b>	Bus ticket 400 yen + Hot Springs entry 610yen + Train ticket 190 yen



# Plan D

## Tour by taxi

# Historical Toyokawa Half day tour by taxi



### Points of interest



Zaiga temple



● Zaiga temple was constructed in AD 724 under the 45th Emperor of Japan, Shomu. The wooden statues enshrined here are of great national and cultural importance and are the second largest of their kind in Japan.



Myogon main temple

● Visit the three main Inari Shrine buildings.



● Enjoy the many flags waving you along to the main temple.

### Time

### Place

13:00  
⋮  
13:20



Take a Taxi from the JR Kou Station Front Taxi Rank

13:20  
⋮  
13:40



Zaiga temple

13:55  
⋮  
14:40



Kokubu temple  
Mikawa Kokubun ni Temple Historic Park



Tenpyo no sato museum

14:40  
⋮  
14:50



Alight Taxi at Meitetsu Kou Station

14:58  
⋮  
15:12



Meitetsu Toyokawa Inari Station (300 yen)

15:20  
⋮  
16:30



Visit Toyokawa Inari and enjoy the Myogon main temple, Reiko-zuka and inner parts of the Inari Shrine area

16:38  
⋮  
17:38



Meitetsu (1,110yen) JR (210yen)  
Toyokawa Inari Sta. Toyokawa Sta.  
Nagoya Sta. Toyohashi Sta.

### Points of interest



Mikawa Kokubun ni Temple Historic Park

● In AD 741 Emperor Shomu decreed Kokubun temple be constructed. It was completed in the second half of the 8th century.



Tenpyo no Sato Museum

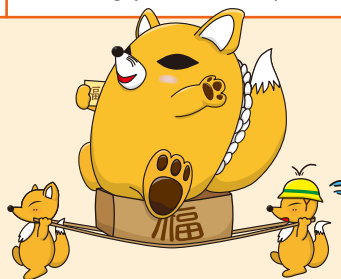
● Volunteer guides available here at the Museum where you can see excavated artefacts on display.



Reiko-zuka

● Amazing fox statues are dedicated here as offerings.

● Reiko-zuka is believed to be a power spot for money.



# Plan E

## Simply Toyokawa Inari Toyokawa Station Area Stay For Visitors On The Go!



### Early morning at Toyokawa Inari (one hour plan)

Points of interest



Points of interest

6:30		Depart Hotel
6:40		Visit Toyokawa Inari
7:30		Arrive Hotel

Points of interest



### Enjoy Toyokawa Inari ! (Toyokawa Inari and Monzen area: three hour sightseeing plan)

Points of interest



Time Place

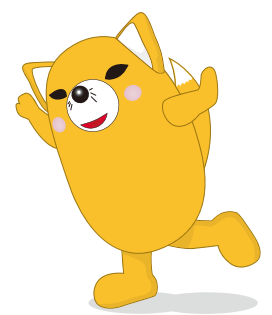
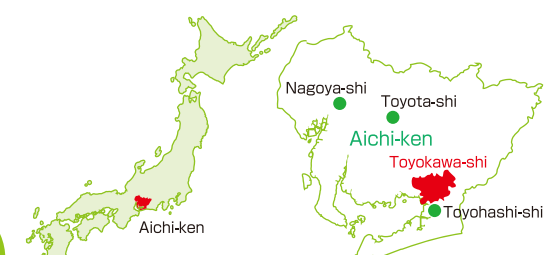
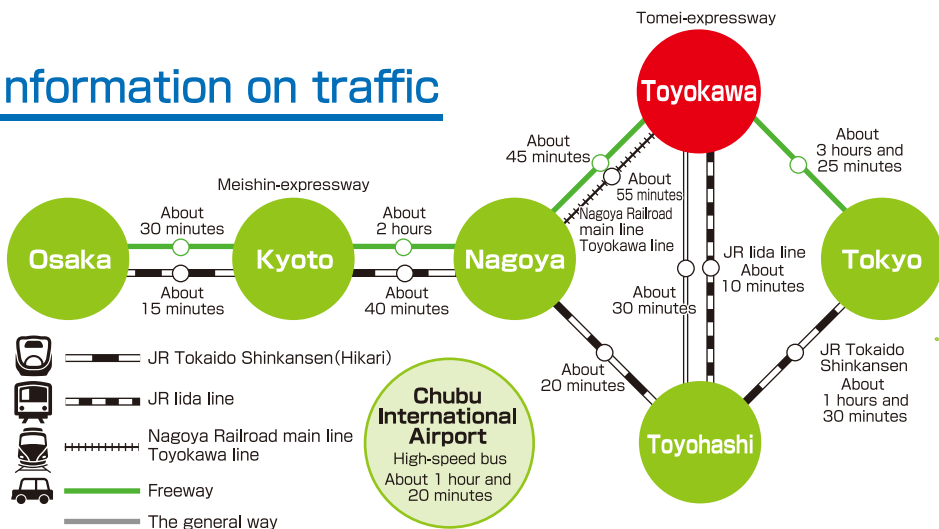
...		Meitetsu (1,110yen) JR(210yen) Nagoya Sta. Toyohashi Sta. Toyokawa Inari Sta. Toyokawa Sta.
approx. three hours		Enjoy walking around Toyokawa Inari and the delightful shopping street.
...		Meitetsu (1,110yen) JR(210yen) Toyokawa Inari Sta. Toyokawa Sta. Nagoya Sta. Toyohashi Sta.

Points of interest

- Visit the famed power spot with a volunteer guide.
- See the amazing sight of over 1000 fox statues dedicated as offerings.
- Visit the power spot for money.
- Enjoy local shopping delights.
- Toyokawa Inarizushi, Eel of Toyokawa and delicious Sowaka dango (300yen) also available here.

<b>Total time required</b>	To/from Nagoya: approx. 5 hours To/from Toyohashi: approx. 3 hours 30 mins
<b>Total cost</b>	To/from Nagoya: 2,220 yen To/from Toyohashi: 420yen

### Information on traffic



**Toyokawa Chamber of Commerce and Industry**

〒442-8540 Aichi ken Toyokawa shi Toyokawa cho Hedori 4-4  
TEL(0533)86-4101 FAX(0533)84-1808 URL : http://www.toyokawa-cci.org

Published March 2018